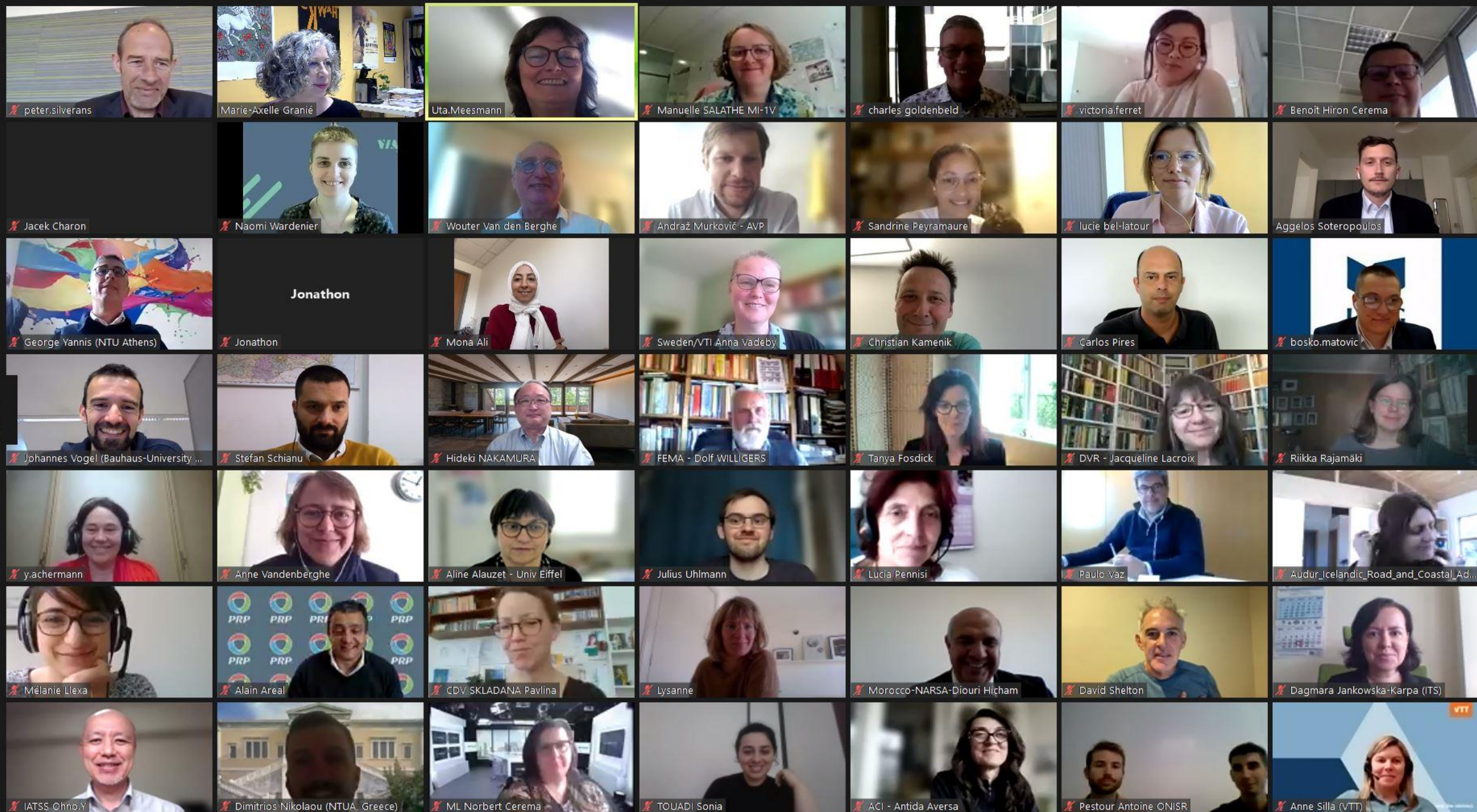


Scientific and institutional conclusions for ESRA3

Wouter Van den Berghe & Uta Meesmann, Vias institute



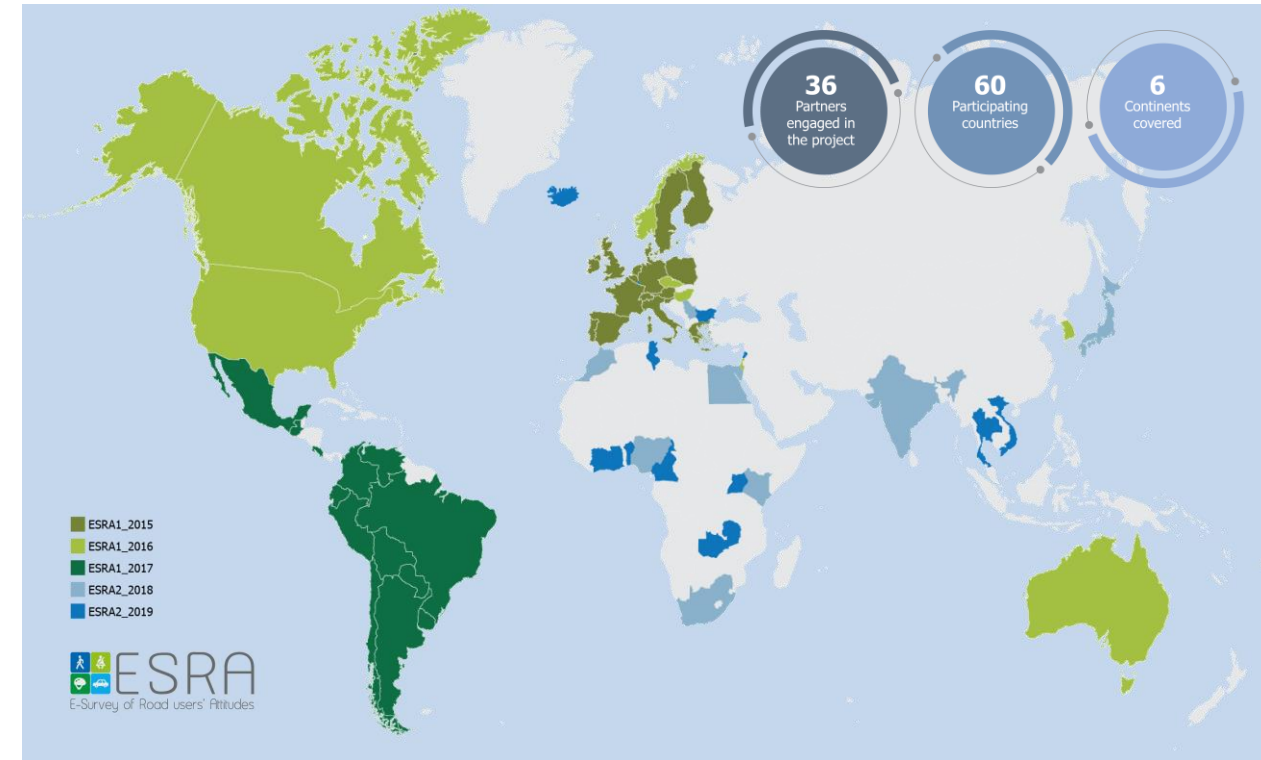


Achievements of the ESRA initiative



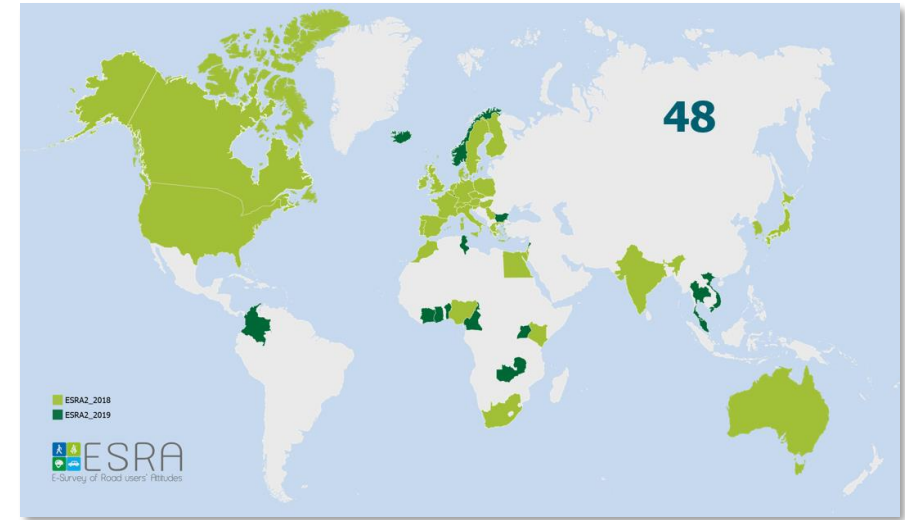
What did ESRA achieve so far?

- ▶ ESRA showed that it is possible to implement a **worldwide system for collecting reliable and comparable information** about national road safety culture, behaviour in traffic and attitudes towards road safety.
- ▶ The ESRA initiative has yielded a **very rich dataset** that is useful for understanding road safety risks and the effectiveness of policy measures.
- ▶ ESRA data is increasingly a part of **national and international road safety monitoring** systems.
- ▶ An evaluation among **ESRA partners** in 2021 showed that most ESRA partners are **very satisfied** with their role in ESRA and with the return on investment for the resources spent on ESRA2.



ESRA2 Consortium – THANKS !

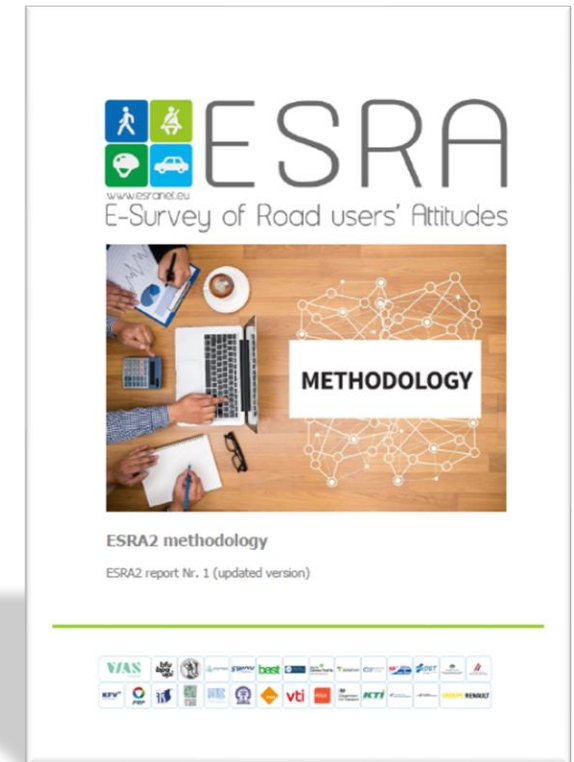
- ESRA2 Steering Group - 12 organizations across the world:
 - BAST, BFU, CTL, IATSS, IFSTTAR, ITS, KfV, NTUA, PRP, SWOV, TIRF, Vias institute
- ESRA2 national partners → 48 countries; 45 000 respondents
 - Africa: Benin, Cameroon, Egypt, Ghana, Ivory Coast, Kenya, Morocco, Nigeria, South Africa, Tunisia, Uganda, Zambia
 - America: Canada, Colombia, USA
 - AsiaOceania: Australia, India, Israel, Japan, Korea, Lebanon, Malaysia, Thailand, Vietnam
 - Europe: Austria, Belgium, Bulgaria, Czech Republic, Denmark, Finland, France, Germany, Greece, Hungary, Iceland, Ireland, Italy, Luxembourg, Netherlands, Norway Poland, Portugal, Serbia, Slovenia, Spain, Sweden, Switzerland, United Kingdom



Key output from ESRA2 - www.esranet.eu

- **Dashboard** with national results
- **Final report** (published soon)
- 15 **Thematic Reports**:

Driving under influence	Subjective safety & risk perception	Pedestrians
Speeding	Enforcement	Cyclists
Distraction (mobile phone use)	Support for policy measures	Moped drivers and motorcyclists
Fatigue	Vehicle automation	Young road users
Seat belt & Child restraint systems	Gender aspects	Senior road users
- 64 **Country Fact Sheets**
- **Regional** report (Africa)
- **Methodology** report
- ESRA **conference**
- ESRA **symposium**
- 6 ESRA **webinars**
- Many scientific **articles**, national reports, conference presentations ...
- Enriched **national datasets** for all ESRA partners
- **International dataset** for Steering Group partners





Example: Country fact sheet - Serbia



Serbia ESRA2 Country Fact Sheet

ESRA (E-Survey of Road Users' Attitudes) is a joint initiative of road safety institutes, research centres, public services, and private sponsors, from all over the world. The aim is to collect and analyse comparable data on road safety performance, in particular road safety culture and behaviour of road users. The ESRA data are used as a basis for a large set of road safety indicators. These provide scientific evidence for policy making at national and international levels. Vias institute in Brussels (Belgium) initiated and coordinates ESRA, in cooperation with eleven core group partners (BAST, BFU, CTL, IATSS, IFSTTAR, ITS, KfV, NTUA, PRP, SWOV, TIRF). At the heart of ESRA is a jointly developed questionnaire survey, which is translated into national language versions¹. The themes covered include: self-declared behaviour, attitudes and opinions on unsafe traffic behaviour, enforcement experiences and support for policy measures. The survey addresses different road safety topics (e.g. driving under the influence of alcohol, drugs and medicines, speeding, distraction) and targets car occupants, motorcycle and moped drivers, cyclists and pedestrians.

This fact sheet contains the key results of the second edition of the ESRA survey, which was conducted simultaneously in 32 countries in 2018 and in 16 countries between 2019 and 2020. In total this online panel survey collected data from more than 45 000 road users (1041 in Serbia). An overview of the initiative and more results are available on www.esranet.eu. The following figures show a core set of variables in which Serbia (green) is compared with the European ESRA2 mean² (white).

Mode of transportation

During the past 12 months, how often did you use the following transport modes (5-point scale from 1=never to 5=at least 4 days week)



Safety feeling

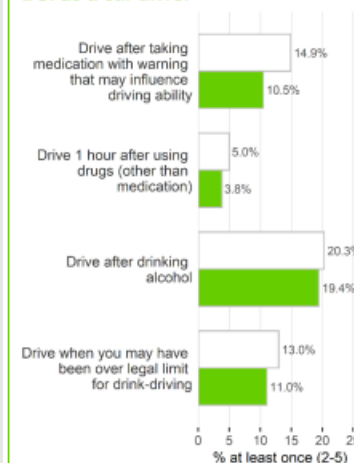
How safe or unsafe do you feel when using the following transport modes (11-point scale from 0=very unsafe to 10=very safe)



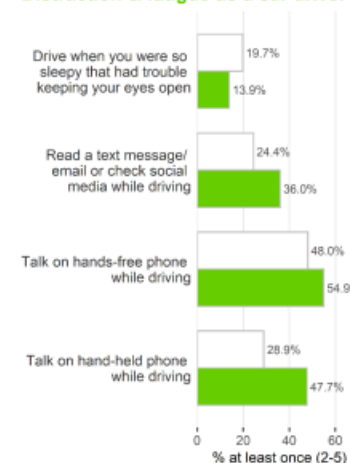
Self-declared behaviour

Over the last 30 days, how often did you... (5-point scale from 1=never to 5=(almost) always)

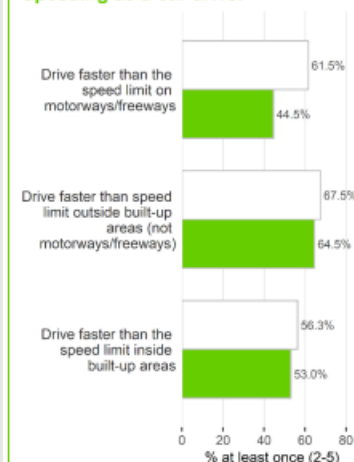
DUI as a car driver



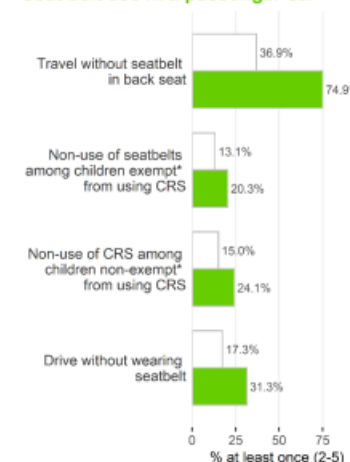
Distraction & fatigue as a car driver



Speeding as a car driver



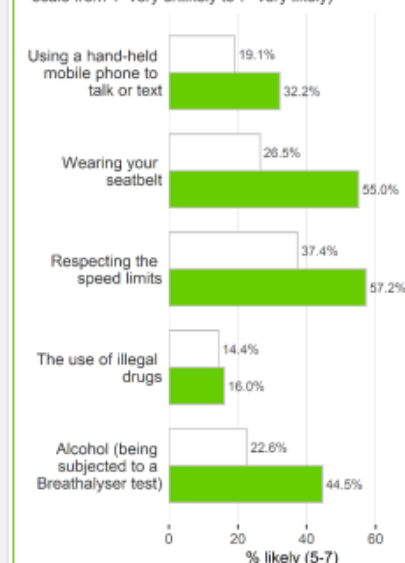
Seat belt use in a passenger car



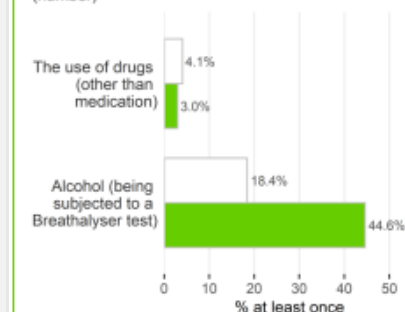
* specified based on national regulation on this topic

Enforcement

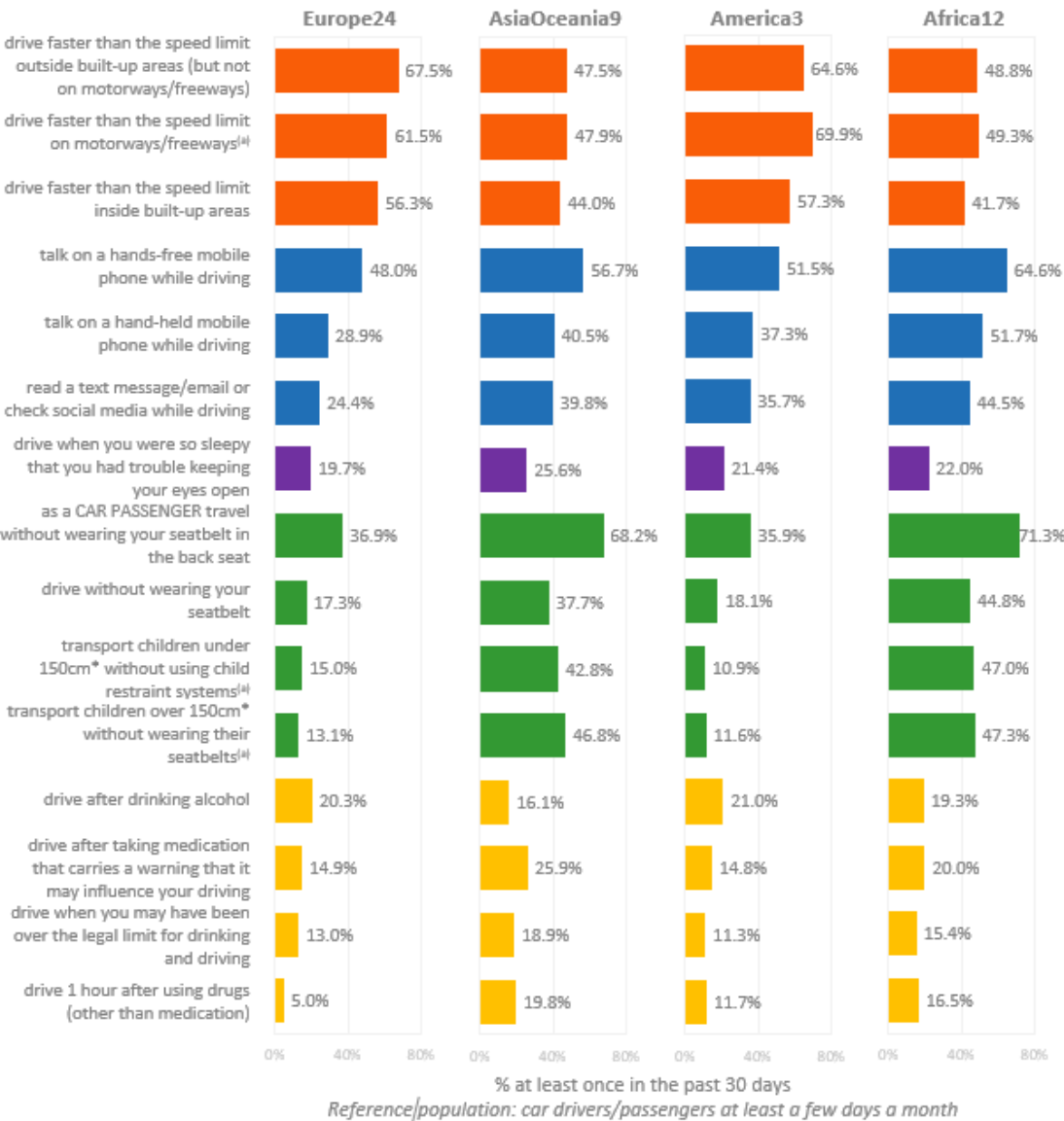
On a typical journey, how likely is it that you (as CAR DRIVER) will be checked by police for... (7-point scale from 1=very unlikely to 7=very likely)



In the past 12 months, how many times (as a CAR DRIVER) have you been checked by the police for... (number)



Example from main report: self-declared unsafe traffic behaviour



- Speeding
- Distraction
- Fatigue
- Seatbelt
- DUI

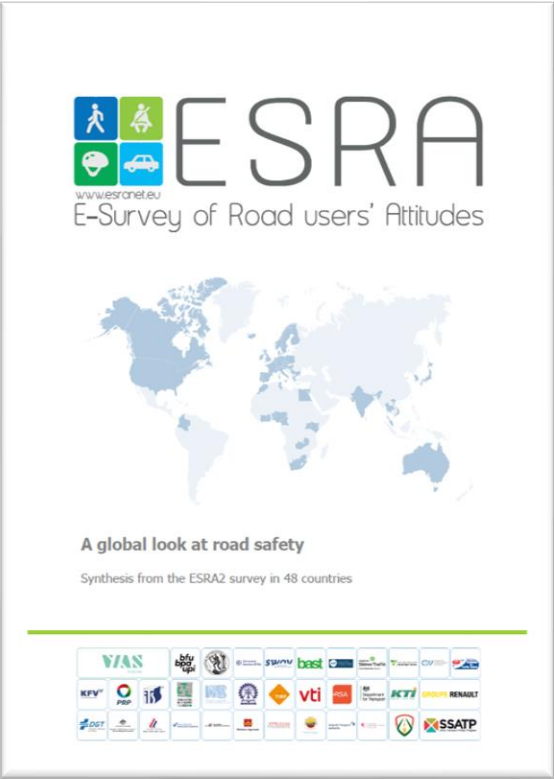


Figure: Self-declared behaviour as a car driver & car passenger, by region (% at least once in the past 30 days – scores 2 to 5 on a 5-point scale from 1 “never” to 5 “[almost] always”).* specified based on national regulation on this topic.

Getting ready for ESRA3!

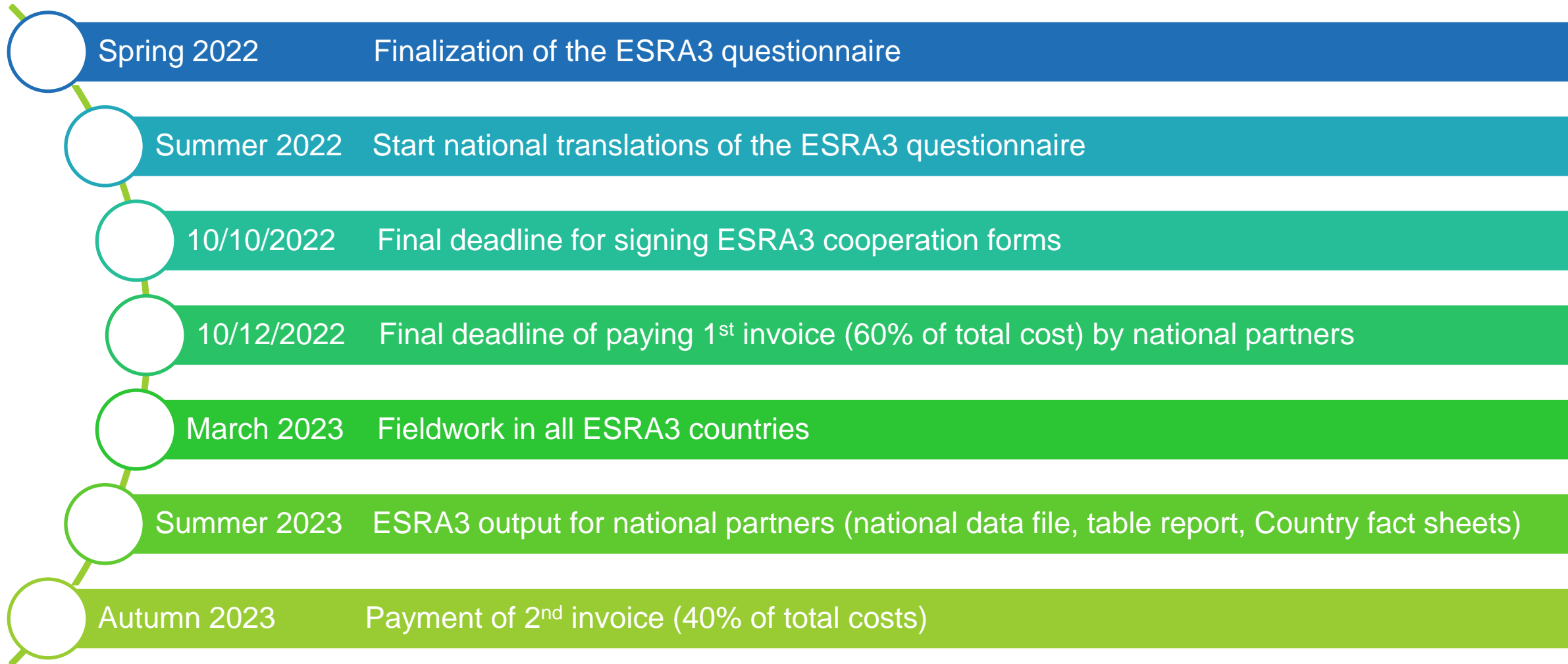


Key features of ESRA3



- Overall **methodological and study design** stays the same - deviations accepted for **special cases**.
 - Representative sample of the national adult population (gender*age 18-75)
 - LOI 20 min; many questions identical with ESRA2; translations done by national partners
 - New: **Regional questions** (e.g. Europe, Africa,...) in cooperation with Regional RS Observatories
 - Central organization of data collection and data processing by Vias institute + Steering Group
- **Data collection in February and March 2023**
- **Results** for national partners (national datafile, table report and CFS) available in **summer 2023**.
- ESRA3 **outputs** will be similar to ESRA2
- Meeting with **ESRA partners** (8-9/09/2022, Paris, hybrid)
- **Funding** of ESRA3 by national partners or sponsors.

Timeline for ESRA3



Some upcoming international events in 2022

- ICADTS, August 28-31, 2022, Rotterdam, The Netherlands (live event)
- ESRA3 partner meeting, September 08-09, 2022, Paris, France (hybrid event)
 - Discuss current status, ESRA3 outputs and next steps in data collection and data processing
- RS5C, October 10-12, 2022 Grapevine (USA, Texas) (live event)
- Other conference contributions for 2022 still to be confirmed

Joining ESRA3 as a National Partner


Benefits of the National Partner:

- Cleaned and enriched **national dataset** of your country/region (individual data)
- Detailed **table report** with all aggregated data from all countries/regions (aggregated data)
- **Country factsheet** which compares the results of your country/region to your overall region
- Mentioning of the national partner organization on all ESRA3 output

Duties of the National Partner:

- **Translate** ESRA3 questionnaire
- **Provide feedback** on national results and contextual information (e.g., legal regulations)
- **Pay national survey costs** and **contribution to overall management costs**
- Publish and disseminate national ESRA3 results & make reference to the ESRA3 survey

If interested contact us via esra@vias.be !



The image shows a 'Cooperation form for ESRA National Partners' from the E-Survey of Road users' Attitudes (ESRA3) 2021-2024. The form is titled 'Please complete this form, sign at the bottom, and send it by email to esra@vias.be.' It contains several sections with green headers: 'COUNTRY AND LANGUAGES' (Country, Language(s)), 'NATIONAL PARTNER' (Institute / Organisation, Address, VST number / company registration number), 'CONTACT PERSON' (Full name, Email address, Phone number, Function / Title), and 'RIGHTS AND BENEFITS OF THE NATIONAL ESRA PARTNER'. The benefits listed include: full access to the cleaned and enriched dataset for the country; a detailed 'Table Report' with a summary of responses to all questions of all countries participating in ESRA3; a country factsheet, including visuals with key road safety indicators on your country; and mentioning of the national ESRA partner on the ESRA website and in all common ESRA3 reports.

Thank you very much for your attention!

Wouter Van den Berghe
Uta Meesmann

Vias institute



Email: uta.meesmann@vias.be & esra@vias.be

Website: www.esranet.eu

A screenshot of a web form titled "E-Survey of Road users' Attitudes Cooperation form for ESRA National Partners Survey: ESRA3 (2023-2024)". The form includes fields for Country, Language(s), Institute / Organization, Address, VAK number / company registration number, Full name, Email address, Phone number, and Function / Title. It also has a section for "RIGHTS AND BENEFITS OF THE NATIONAL ESRA PARTNER" with bullet points describing the benefits of participation.